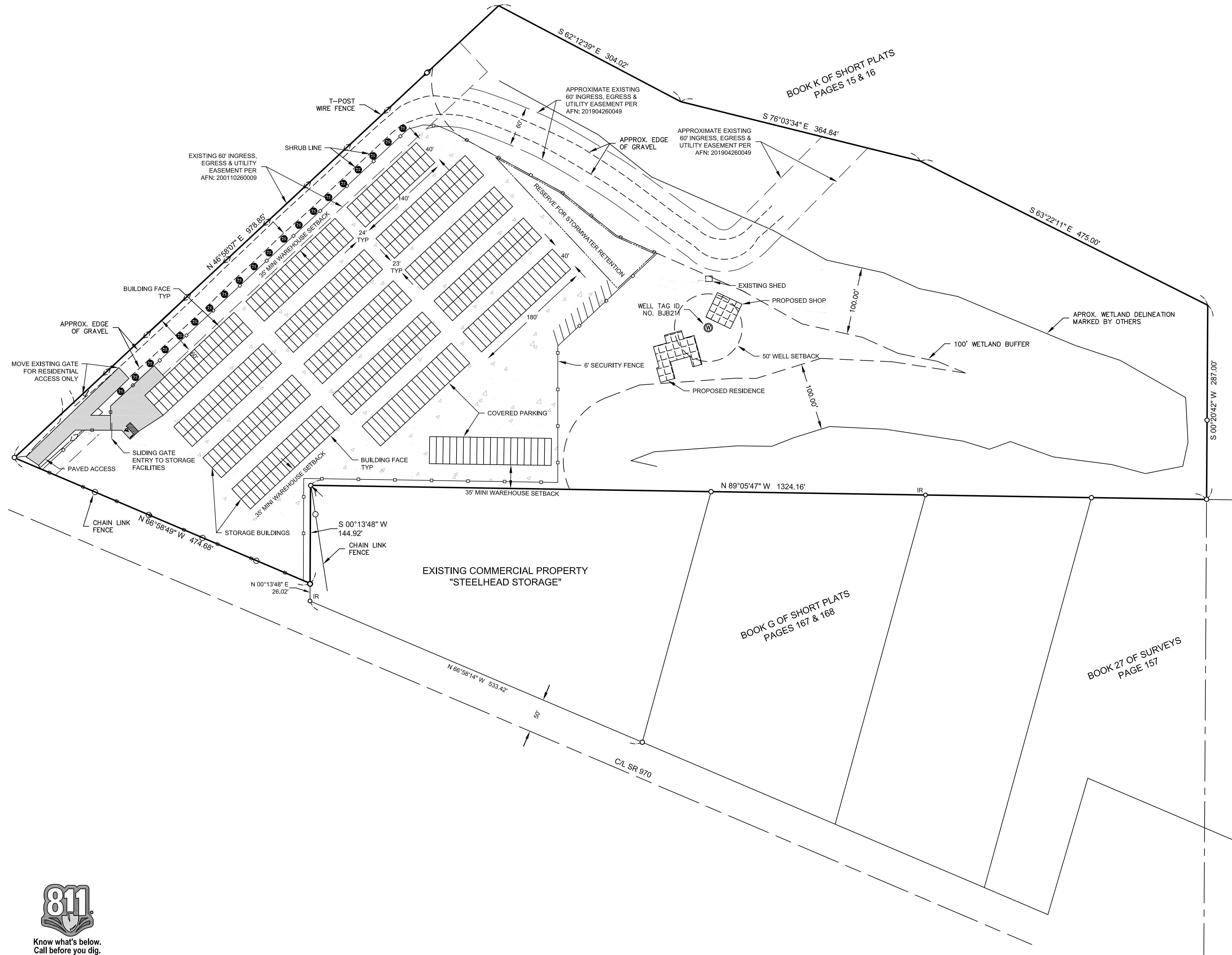
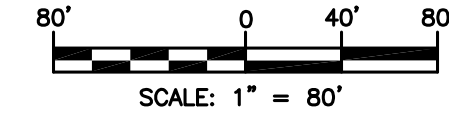


3581 SR 970

A PORTION OF THE E 1/2 OF THE SW 1/4 & A PORTION OF THE NW 1/4 OF THE SE 1/4 OF SECTION 32, T. 20 N., R. 16 E., W.M.
KITITAS COUNTY, STATE OF WASHINGTON



REVISIONS	DESCRIPTION	BY	DATE

REVIEW DRAFT

WLC PROPERTY HOLDINGS LLC
SITE PLAN

Encompass
ENGINEERING & SURVEYING
Western Washington Division
165 NE Juniper Street, Suite 201 • Issaquah, WA 98027 • Phone: (425) 392-0230
Eastern Washington Division
407 Southwater Blvd • Cle Elum, WA 98922 • Phone: (509) 671-7333

JOB NO.	20182
DATE	
SCALE	
DESIGNED	
DRAWN	
CHECKED	
APPROVED	
SHEET	

